



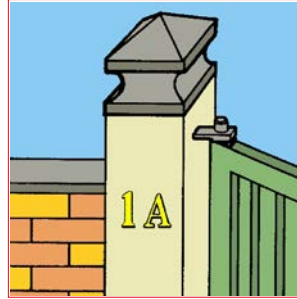
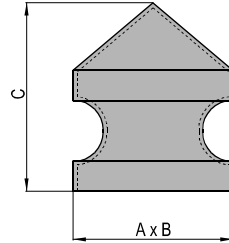
PETTITI GIUSEPPE s.p.a.

COPRIPILASTRI IN ACCIAIO

COVER PILLAR IN STEEL

COUVRE PILIER EN ACIER

COPRIPILASTRO SAGOMATO IN ACCIAIO

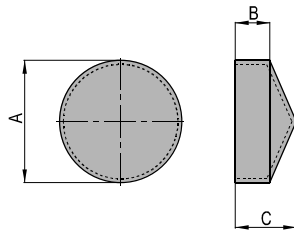


Shaped cover pillar in steel, hot forged welded plate, with flashes.
Couvre pilier façonné en acier, avec ébarbages.

CPL70
AD ESAURIMENTO - TO EXHAUSTION
À ÉPUISEMENT

ART.	A	B	C	Confez. Box	Peso Kg Weight
CPL50	50	50	73	12	0,126
CPL60	60	60	88	12	0,200
CPL70	70	70	103	12	0,254
CPL80	80	80	110	12	0,280
CPL100	100	100	150	12	0,580
CPL120	120	120	160	12	0,810
CPL150	150	150	200	4	1,235
CPL200	200	60	88	2	0,200

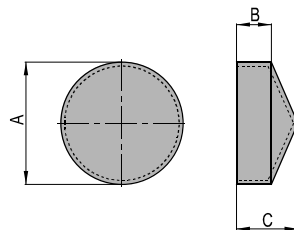
COPRIPILASTRO TONDO IN ACCIAIO



Round cover pillar with edge, in steel.
Couvre pilier rond avec bord, en acier.

ART.	A	B	C	Confez. Box	Peso Kg Weight
CPT30	34	13	21	250	0,022
CPT33	37	9	21	250	0,025
CPT42	46	13	21	160	0,036
CPT48	52	15	28	110	0,050
CPT60	64	15	30	70	0,069
CPT76	80	15	32	50	0,096
CPT90	94	13	32	40	0,116
CPT101	105	13	32	36	0,148
CPT114	118	13	32	32	0,179

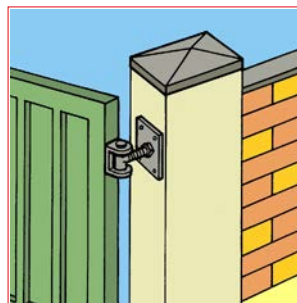
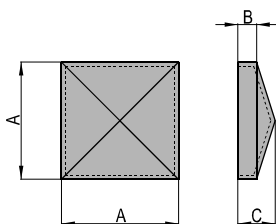
COPRIPILASTRO TONDO IN ACCIAIO ZINCATO



Round cover pillar with edge, in zinked steel.
Couvre pilier rond avec bord, en acier zingué.

ART.	A	B	C	Confez. Box	Peso Kg Weight
CPT30Z	34	13	21	250	0,022
CPT33Z	37	9	21	250	0,025
CPT42Z	46	13	21	160	0,036
CPT48Z	52	15	28	110	0,050
CPT60Z	64	15	30	70	0,069
CPT76Z	80	15	32	50	0,096
CPT90Z	94	13	32	40	0,116
CPT101Z	105	13	32	36	0,148
CPT114Z	118	13	32	32	0,179

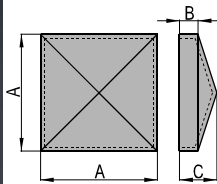
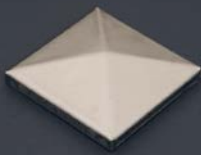
COPRIPILASTRO QUADRO IN ACCIAIO



Square cover pillar with edge, in steel.
Couvre pilier carré avec bord, en acier.

ART.	A	B	C	Confez. Box	Peso Kg Weight
CP20	24	7.5	11	300	0,014
CP30	34	7.5	12	300	0,023
CP40	44	7.5	14	180	0,038
CP50	54	7.5	16	120	0,052
CP60	64	7.5	19	80	0,067
CP80	84	7.5	21	50	0,109
CP100	104	7.5	25	40	0,163
CP120	124	7.5	28	40	0,222
CP150	154	7.5	34	20	0,343
CP175	179	7.5	36	25	0,570
CP200	204	7.5	38	20	0,720

COPRIPILASTRO QUADRO IN ACCIAIO ZINCATO

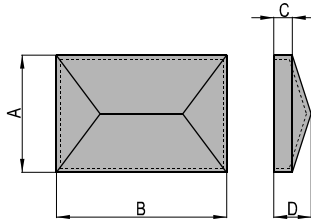
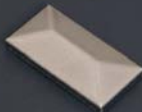


ART.	A	B	C	Confez. Box	Peso Kg Weight	ART.	A	B	C	Confez. Box	Peso Kg Weight
CP20Z	24	7.5	11	300	0,014	CP80Z	84	7.5	21	50	0,109
CP30Z	34	7.5	12	300	0,023	CP100Z	104	7.5	25	40	0,163
CP40Z	44	7.5	14	180	0,038	CP120Z	124	7.5	28	40	0,222
CP50Z	54	7.5	16	120	0,052	CP150Z	154	7.5	34	20	0,343
CP60Z	64	7.5	19	80	0,067	CP175Z	179	7.5	36	25	0,570
						CP200Z	204	7.5	38	20	0,720

Square cover pillar with edge, in zinked steel.

Couvre pilier carré avec bord, en acier zingué.

COPRIPILASTRO RETTANGOLARE

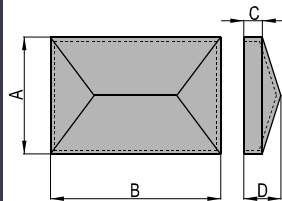
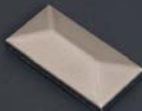


Rectangular cover pillar with edge, in steel.

Couvre pilier rectangulaire avec bord, en acier.

ART.	A	B	C	D	Confez. Box	Peso Kg Weight
CPR2030	24	34	7	12	300	0,019
CPR2040	24	44	7	12	300	0,023
CPR3050	34	54	7	14	200	0,036
CPR3060	34	64	7	14	200	0,041
CPR4060	44	64	7	16	100	0,050
CPR4080	44	84	7	16	100	0,066
CPR50100	54	104	7	20	60	0,092

COPRIPILASTRO RETTANGOLARE IN ACCIAIO ZINCATO

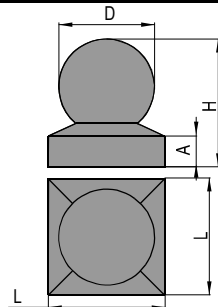


Rectangular cover pillar with edge, in zinked steel.

Couvre pilier rectangulaire avec bord, en acier zingué.

ART.	A	B	C	D	Confez. Box	Peso Kg Weight
CPR2030Z	24	34	7	12	300	0,019
CPR2040Z	24	44	7	12	300	0,023
CPR3050Z	34	54	7	14	200	0,036
CPR3060Z	34	64	7	14	200	0,041
CPR4060Z	44	64	7	16	100	0,050
CPR4080Z	44	84	7	16	100	0,066
CPR50100Z	54	104	7	20	60	0,092

COPRIPILASTRO SAGOMATO IN ACCIAIO



CPS120
AD ESAURIMENTO
TO EXHAUSTION
À ÉPUISEMENT

Shaped cover pillar, in steel.

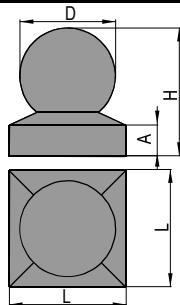
Couvre pilier façonné, en acier.

ART.	L	A	D	H	Confez. Box	Peso Kg Weight
CPS40	43	19	30	50	25	0,100
CPS50	53	17	52	75	25	0,115
CPS60	63	20	60	80	25	0,140
CPS70	73	20	66	90	25	0,130
CPS80	83	20	75	100	25	0,255
CPS100	104	20	90	105	25	0,285
CPS120	124	20	99	125	25	0,356

COPRIPILASTRO SAGOMATO IN ACCIAIO INOX



INOX - STAINLESS



AD ESAURIMENTO
TO EXHAUSTION
À ÉPUISEMENT

Shaped cover pillar, in stainless steel.

Couvre pilier façonné, en acier inox.

ART.	L	A	D	H	Confez. Box	Peso Kg Weight
CPSI70	73	19	59	80	25	0,138
CPSI100	104	20	85	107	25	0,266
CPSI120	124	20	99	125	25	0,356



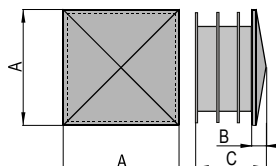
PETTTI GIUSEPPE s.p.a.

COPRIPILASTRI IN PLASTICA NERA

COVER PILLAR IN PLASTIC

COUVRE PILIER EN PLASTIQUE

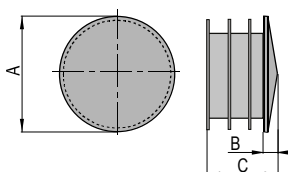
COPRIPILASTRO QUADRO IN PLASTICA



Square cover pillar, in plastic.
Couvre pilier carré, en plastique.

ART.	A	B	C	Confez. Box	Peso Kg Weight
CPP12	12	3	12	200	0,002
CPP15	15	3	14	200	0,002
CPP16	16	3	10	200	0,015
CPP20	20	4	15	200	0,003
CPP25	25	5	20	100	0,006
CPP30	30	5	20	100	0,012
CPP35	35	4	19	50	0,012
CPP40	40	4	20	50	0,009
CPP50	50	5	25	50	0,024
CPP60	60	5	25	50	0,041
CPP80	80	5	30	25	0,064
CPP100	100	5	30	25	0,097

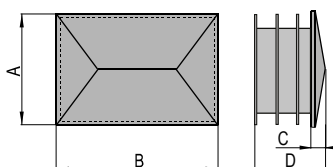
COPRIPILASTRO TONDO IN PLASTICA



Round cover pillar, in plastic.
Couvre pilier rond, en plastique.

ART.	A	B	C	Confez. Box	Peso Kg Weight
CPPT10	12	2	10	500	0,002
CPPT15	15	3	11	200	0,005
CPPT20	20	4	17	200	0,005
CPPT25	25	5	17	200	0,005
CPPT30	30	5	20	100	0,005
CPPT35	35	5	22	100	0,006
CPPT40	40	5	22	50	0,007
CPPT45	45	5	22	50	0,008
CPPT50	50	5	22	50	0,009
CPPT60	60	5	22	50	0,012
CPPT80	80	6	23	50	0,020
CPPT100	100	6	35	50	0,060

COPRIPILASTRO RETTANGOLARE IN PLASTICA



Rectangular cover pillar, in plastic.
Couvre pilier rectangulaire, en plastique.

ART.	A	B	C	D	Confez. Box	Peso Kg Weight
CPPR1530	15	30	3,5	13,5	200	0,004
CPPR2030	20	30	4	14	200	0,006
CPPR2040	20	40	4	15	100	0,012
CPPR2540	25	40	4	16	100	0,014
CPPR3040	30	40	5	18	100	0,009
CPPR3050	30	50	5	18	50	0,009
CPPR3060	30	60	6	22	50	0,014
CPPR30100	30	100	3	19	50	0,025





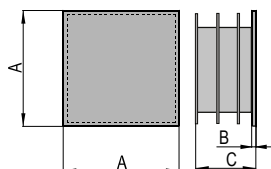
PETTTI GIUSEPPE s.p.a.

COPRIPILASTRI PIANI IN PLASTICA NERA

COVER PILLAR, PLANE, IN PLASTIC

COUVRE PILIER, PLAN, EN PLASTIQUE

COPRIPILASTRO QUADRO, PIANO, IN PLASTICA



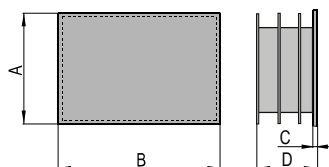
NOVITÀ - NEW
NOUVEAU

ART.	A	B	C	Confez. Box	Peso Kg Weight
CPP15P	15	4	15	200	0,002
CPP20P	20	5	22	200	0,003
CPP25P	25	5	22	100	0,006
CPP30P	30	5	24	100	0,012
CPP35P	35	6	24	50	0,012
CPP40P	40	6	24	50	0,009
CPP50P	50	6	27	50	0,024
CPP60P	60	6	30	50	0,041
CPP70P	70	6	31	25	0,050
CPP80P	80	6	36	25	0,064
CPP100P	100	6	36	25	0,097

Square cover pillar, plane, in plastic.

Couvre pilier carré, plan, en plastique.

COPRIPILASTRO RETTANGOLARE, PIANO, IN PLASTICA



NOVITÀ - NEW
NOUVEAU

ART.	A	B	C	D	Confez. Box	Peso Kg Weight
CPPR1530P	15	30	5	17	200	0,004
CPPR2030P	20	30	5	22	200	0,006
CPPR2040P	20	40	5	22	100	0,012
CPPR2050P	20	50	5	22	100	0,015
CPPR2060P	20	60	5	22	100	0,018
CPPR20100P	20	100	6	29	50	0,039
CPPR2540P	25	40	6	24	100	0,014
CPPR3040P	30	40	6	24	100	0,009
CPPR3050P	30	50	6	24	50	0,009
CPPR3060P	30	60	6	27	50	0,014
CPPR3080P	30	80	6	23	50	0,016
CPPR4060P	40	60	6	23	50	0,016
CPPR4080P	40	80	6	29	50	0,027
CPPR40100P	40	100	6	29	50	0,034
CPPR50100P	50	100	6	29	50	0,042

Rectangular cover pillar, plane, in plastic.

Couvre pilier rectangulaire, plan, en plastique.





PETTITI GIUSEPPE s.p.a.

LANCE IN ACCIAIO FORGIATO

LANCE IN ACCIAIO FORGIATO PER CANCELLATE

LANCES DE ACIERO FORJADO PARA REJAS

LANCES EN ACIER FORGE POUR GRILLES

LANCIA



ART.	H	Base
LA2000	130	● 20x19

ART.	Confez. Box	Peso Kg Weight
LA2000	50	0,356

LANCIA



ART.	H	Base
LB2000	137	● 22x19

AD ESAURIMENTO
TO EXHAUSTION
À ÉPUISEMENT

ART.	Confez. Box	Peso Kg Weight
LB2000	40	0,454

LANCIA



ART.	H	Base
LD2000	210	● 17

ART.	Confez. Box	Peso Kg Weight
LD2000	30	0,571

LANCIA



ART.	H	Base
LS2000	128	● 15

ART.	Confez. Box	Peso Kg Weight
LS2000	100	0,114

LANCIA



ART.	H	Base
LI2000/1	70	■ 12
LI2000/2	70	■ 10

ART.	Confez. Box	Peso Kg Weight
LI2000/1	100	0,095
LI2000/2	100	0,101

LANCIA



ART.	H	Base
LO2000	125	■ 20
LO2000/1	160	■ 32

ART.	Confez. Box	Peso Kg Weight
LO2000	50	0,218
LO2000/1	25	0,600

LANCIA



ART.	H	Base
LFB1	167	● 30

ART.	Confez. Box	Peso Kg Weight
LFB1	25	0,586

LANCIA



ART.	H	Base
LR2000	155	● 16

ART.	Confez. Box	Peso Kg Weight
LR2000	50	0,254

LANCIA



ART.	H	Base
LFA1	200	● 41

AD ESAURIMENTO
TO EXHAUSTION
À ÉPUISEMENT

ART.	Confez. Box	Peso Kg Weight
LFA1	25	0,824

LANCIA



ART.	H	Base
LX2000	155	■ 40

ART.	Confez. Box	Peso Kg Weight
LX2000	10	1,085

LANCIA



ART.	H	Base
LT2000/1	170	■ 14

ART.	Confez. Box	Peso Kg Weight
LT2000/1	50	0,205

LANCIA



ART.	H	Base
LT2000/4	150	● 16

ART.	Confez. Box	Peso Kg Weight
LT2000/4	50	0,118

LANCIA



ART.	H	Base
LV2000	140	■ 14

ART.	Confez. Box	Peso Kg Weight
LV2000	50	0,350

LANCIA



ART.	H	Base
LV2001	125	● 31

ART.	Confez. Box	Peso Kg Weight
LV2001	50	0,272

LANCIA



ART.	H	Base
LC2000/2	120	■ 25

ART.	Confez. Box	Peso Kg Weight
LC2000/2	50	0,195

LANCIA



ART.	H	Base
LN2000	155	● 16

ART.	Confez. Box	Peso Kg Weight
LN2000	50	0,252

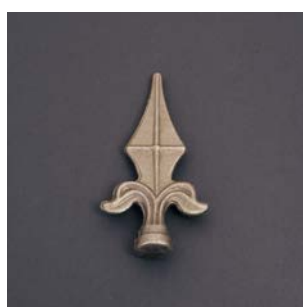
LANCIA



ART.	H	Base
LQ2000/2	120	● 30

ART.	Confez. Box	Peso Kg Weight
LQ2000/2	50	0,195

LANCIA



ART.	H	Base
LE2001/1	115	● 20
LE2001/2	133	● 26

ART.	Confez. Box	Peso Kg Weight
LE2001/1	50	0,200
LE2001/2	50	0,260

LANCIA



ART.	H	Base
LZ2000/1	80	● 20
LZ2000/2	125	● 25
LZ2000/3	140	● 38

LZ2000/3
AD ESAURIMENTO - TO EXHAUSTION
À ÉPUISEMENT

ART.	Confez. Box	Peso Kg Weight
LZ2000/1	50	0,120
LZ2000/2	50	0,362
LZ2000/3	25	0,832

LANCIA



ART.	H	Base
LH2000/1	97	● 20
LH2000/2	135	● 25
LH2000/3	160	● 30
LH2000/4	190	● 32

ART.	Confez. Box	Peso Kg Weight
LH2000/1	200	0,086
LH2000/2	50	0,158
LH2000/3	50	0,294
LH2000/4	40	0,410

LANCIA



ART.	H	Base
LE2000/1	88	● 10
LE2000/2	130	● 12
LE2000/3	155	● 17,5
LE2000/4	192	● 19

ART.	Confez. Box	Peso Kg Weight
LE2000/1	200	0,062
LE2000/2	50	0,192
LE2000/3	50	0,302
LE2000/4	40	0,486

LANCIA



ART.	H	Base
LE2000/2P	130	● 13
LE2000/3P	155	● 17
LE2000/4P	190	● 19

LE2000/3P - LE2000/4P
AD ESAURIMENTO - TO EXHAUSTION
À ÉPUISEMENT - A AGOTAMIENTO

ART.	Confez. Box	Peso Kg Weight
LE2000/2P	50	0,157
LE2000/3P	50	0,309
LE2000/4P	40	0,493

LANCIA



ART.	H	Base
LF2000/1	86	● 9
LF2000/2	127	● 13
LF2000/3	147	● 16
LF2000/4	192	● 20

ART.	Confez. Box	Peso Kg Weight
LF2000/1	200	0,050
LF2000/2	50	0,128
LF2000/3	50	0,286
LF2000/4	40	0,478

LANCIA



ART.	H	Base
LG2000/1	90	● 20
LG2000/2	122	● 26
LG2000/3	148	● 31
LG2000/4	180	● 34

ART.	Confez. Box	Peso Kg Weight
LG2000/1	250	0,066
LG2000/2	50	0,120
LG2000/3	50	0,236
LG2000/4	10	0,332

LANCIA



ART.	H	Base
LM2000/1	80	● 22
LM2000/2	110	● 28
LM2000/3	140	● 32

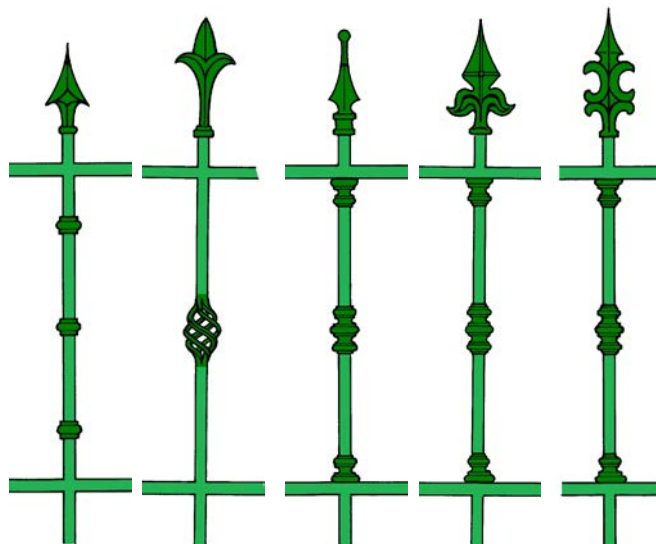
ART.	Confez. Box	Peso Kg Weight
LM2000/1	100	0,110
LM2000/2	50	0,240
LM2000/3	40	0,404

LANCIA



ART.	H	Base
LP2000/1	82	■ 15
LP2000/2	110	■ 18
LP2000/3	140	■ 23
LP2000/4	170	■ 25

ART.	Confez. Box	Peso Kg Weight
LP2000/1	100	0,084
LP2000/2	100	0,162
LP2000/3	50	0,310
LP2000/4	50	0,440





PETTITI GIUSEPPE s.p.a.

BORCHIE E ORNAMENTI IN GHISA

BOSSES AND ORNAMENTS IN CAST IRON

GARNITURES ET ORNEMENTS EN FONTE

BORCHIA



ART.	H	L	∅
B/QG12	22	∅ 40	12.5
B/QG14	22	∅ 40	14.5
B/QG16	22	∅ 40	16.5

ART.	Confez. Box	Peso Kg Weight	
B/QG12	100	0,122	
B/QG14	100	0,116	
B/QG16	100	0,112	

BORCHIA



ART.	H	L	∅
B/TG12	22	∅ 40	12.5
B/TG14	22	∅ 40	14.5
B/TG16	22	∅ 40	16.5

ART.	Confez. Box	Peso Kg Weight	
B/TG12	100	0,126	
B/TG14	100	0,120	
B/TG16	100	0,108	

Zincabili solo a freddo.

Only cold zincable.

Zingables seulment a froid.

BORCHIA



ART.	H	L	∅
O/Q12Q	28	∅ 40	12.5
O/Q14Q	28	∅ 40	14.5
O/Q16Q	28	∅ 40	16.5

ART.	Confez. Box	Peso Kg Weight	
O/Q12Q	50	0,158	
O/Q14Q	50	0,150	
O/Q16Q	50	0,132	

ORNAMENTO



ART.	H	L	∅
O/MQ12Q	38	∅ 41	12.5
O/MQ14Q	38	∅ 41	14.5
O/MQ16Q	38	∅ 41	16.5

ART.	Confez. Box	Peso Kg Weight	
O/MQ12Q	50	0,198	
O/MQ14Q	50	0,194	
O/MQ16Q	50	0,189	

ORNAMENTO



ART.	H	L	∅
OD/Q12Q	65	∅ 41	12.5
OD/Q14Q	65	∅ 41	14.5
OD/Q16Q	65	∅ 41	16.5

ART.	Confez. Box	Peso Kg Weight	
OD/Q12Q	50	0,295	
OD/Q14Q	50	0,270	
OD/Q16Q	50	0,242	





PETTITI GIUSEPPE s.p.a.

BORCHIE E ORNAMENTI IN ACCIAIO DI FUSIONE

BOSSES AND ORNAMENTS IN CAST STEEL

GARNITURES ET ORNEMENTS EN ACIER COULE

ORNAMENTO



ART.	H	L	φ
O/P12	40	φ 40	12.5
O/P14	40	φ 40	14.5
O/P16	40	φ 40	16.5

ART.	Confez. Box	Peso Kg Weight	
O/P12	50	0,194	
O/P14	50	0,176	
O/P16	50	0,166	

ORNAMENTO



ART.	H	L	∅
O/P12Q	40	φ 40	12.5
O/P14Q	40	φ 40	14.5

ART.	Confez. Box	Peso Kg Weight	
O/P12Q	50	0,194	
O/P14Q	50	0,176	

ORNAMENTO



ART.	H	L	∅
O/M12Q	42	φ 42	12.5
O/M14Q	42	φ 42	14.5
O/M16Q	42	φ 42	16.5

ART.	Confez. Box	Peso Kg Weight	
O/M12Q	50	0,235	
O/M14Q	50	0,220	
O/M16Q	50	0,216	

ORNAMENTO



ART.	H	L	∅
O/MQ12QA	38	∅ 41	12.5
O/MQ14QA	38	∅ 41	14.5
O/MQ16QA	38	∅ 41	16.5

ART.	Confez. Box	Peso Kg Weight	
O/MQ12QA	50	0,238	
O/MQ14QA	50	0,234	
O/MQ16QA	50	0,229	

ORNAMENTO



ART.	H	L	∅
OD/Q12QA	65	∅ 41	12.5
OD/Q14QA	65	∅ 41	14.5
OD/Q16QA	65	∅ 41	16.5

ART.	Confez. Box	Peso Kg Weight	
OD/Q12QA	50	0,335	
OD/Q14QA	50	0,310	
OD/Q16QA	50	0,282	

ORNAMENTO



ART.	H	L	φ
OD/P12	65	φ 40	12.5
OD/P14	65	φ 40	14.5
OD/P16	65	φ 40	16.5

ART.	Confez. Box	Peso Kg Weight	
OD/P12	50	0,260	
OD/P14	50	0,246	
OD/P16	50	0,212	

ORNAMENTO



ART.	H	L	φ
OD/P12Q	65	φ 40	12.5
OD/P14Q	65	φ 40	14.5

ART.	Confez. Box	Peso Kg Weight	
OD/P12Q	50	0,260	
OD/P14Q	50	0,246	

ORNAMENTO



ART.	H	L	∅
OD/M12Q	68	φ 42	12.5
OD/M14Q	68	φ 42	14.5
OD/M16Q	68	φ 42	16.5

ART.	Confez. Box	Peso Kg Weight	
OD/M12Q	50	0,347	
OD/M14Q	50	0,345	
OD/M16Q	50	0,340	

BORCHIA



ART.	H	L	∅
O/Q12QA	28	∅ 40	12.5
O/Q14QA	28	∅ 40	14.5
O/Q16QA	28	∅ 40	16.5

ART.	Confez. Box	Peso Kg Weight	
O/Q12QA	50	0,198	
O/Q14QA	50	0,190	
O/Q16QA	50	0,172	



Si consiglia di saldare ad elettrodo e di zincare ad una temperatura massima di 430-460°

It is advised to knit to electrode and to galvaneze to the maximum temperature of 430-460°

On conseille de souder à électrode et de zinguer à une température maximale de 430-460°





PETTITI GIUSEPPE s.p.a.

BORCHIE E ORNAMENTI IN ACCIAIO FORGIATO

BOSSES AND ORNAMENTS IN FORGED STEEL

GARNITURES ET ORNEMENTS EN ACIER FORGE

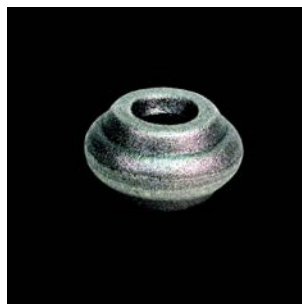
BORCHIA



ART.	H	L	∅
B/Q12	22	∅ 40	12.5
B/Q14	22	∅ 40	14.5
B/Q16	22	∅ 40	16.5

ART.	Confez. Box	Peso Kg Weight
B/Q12	100	0,126
B/Q14	100	0,116
B/Q16	100	0,106

BORCHIA



ART.	H	L	∅
B/T12	22	∅ 40	12.5
B/T14	22	∅ 40	14.5
B/T16	22	∅ 40	16.5
B/T20	22	∅ 40	20.5

ART.	Confez. Box	Peso Kg Weight
B/T12	100	0,136
B/T14	100	0,120
B/T16	100	0,108
B/T20	100	0,106

ORNAMENTO



ART.	H	L	∅
O/P12F	38	∅ 39	12.5
O/P14F	38	∅ 39	14.5
O/P16F	38	∅ 39	16.5

ART.	Confez. Box	Peso Kg Weight
O/P12F	50	0,194
O/P14F	50	0,176
O/P16F	50	0,166

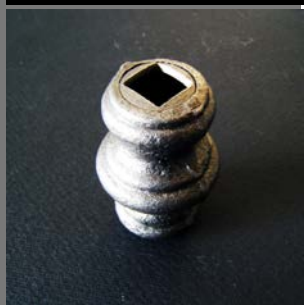
ORNAMENTO



ART.	H	L	∅
OD/P12F	65	∅ 39	12.5
OD/P14F	65	∅ 39	14.5
OD/P16F	65	∅ 39	16.5

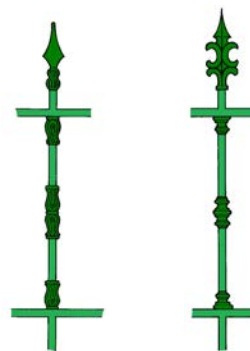
ART.	Confez. Box	Peso Kg Weight
OD/P12F	50	0,265
OD/P14F	50	0,250
OD/P16F	50	0,220

ORNAMENTO



ART.	H	L	∅
OD/P12QF	65	∅ 42	12.5
OD/P14QF	65	∅ 42	14.5
OD/P16QF	65	∅ 42	16.5

ART.	Confez. Box	Peso Kg Weight
OD/P12QF	50	0,245
OD/P14QF	50	0,230
OD/P16QF	50	0,200



ORNAMENTO



ART.	H	L	∅
O/M12	42	∅ 42	12.5
O/M14	42	∅ 42	14.5
O/M16	42	∅ 42	16.5
O/M18	42	∅ 42	18.5
O/M20	42	∅ 42	20.5

ART.	Confez. Box	Peso Kg Weight
O/M12	50	0,346
O/M14	50	0,344
O/M16	50	0,318
O/M18	50	0,266
O/M20	50	0,238

ORNAMENTO



ART.	H	L	∅
OD/M12	68	∅ 42	12.5
OD/M14	68	∅ 42	14.5
OD/M16	68	∅ 42	16.5
OD/M18	68	∅ 42	18.5
OD/M20	68	∅ 42	20.5

ART.	Confez. Box	Peso Kg Weight
OD/M12	50	0,346
OD/M14	50	0,344
OD/M16	50	0,318
OD/M18	50	0,266
OD/M20	50	0,238

ORNAMENTO



ART.	H	L	∅
B/C12	65	∅ 34	12.5
B/C14	65	∅ 34	14.5
B/C16	65	∅ 34	16.5

ART.	Confez. Box	Peso Kg Weight
B/C12	40	0,246
B/C14	40	0,198
B/C16	40	0,180

ORNAMENTO



ART.	H	L	∅
B/L12	120	∅ 34	12.5
B/L14	120	∅ 34	14.5
B/L16	120	∅ 34	16.5

ART.	Confez. Box	Peso Kg Weight
B/L12	25	0,440
B/L14	25	0,388
B/L16	25	0,364





PETTITI GIUSEPPE s.p.a.

BORCHIE E ORNAMENTI IN ACCIAIO TORNITO

BOSSES AND ORNAMENTS IN TURNED STEEL

GARNITURES ET ORNEMENTS EN ACIER TOURNE

ORNAMENTO



ART.	H	L	φ
O/S12	26	φ 36	12.5
O/S14	26	φ 36	14.5
O/S16	26	φ 36	16.5
O/S18	26	φ 36	18.5

ART.	Confez. Box	Peso Kg Weight	
O/S12	125	0,100	
O/S14	125	0,095	
O/S16	125	0,086	
O/S18	125	0,072	

BORCHIA



ART.	H	L	φ
B/TT12	22	φ 40	12.5
B/TT14	22	φ 40	14.5
B/TT16	22	φ 40	16.5
B/TT18	22	φ 40	18.5

ART.	Confez. Box	Peso Kg Weight	
B/TT12	100	0,138	
B/TT14	100	0,134	
B/TT16	100	0,126	
B/TT18	100	0,120	

ORNAMENTO



ART.	H	L	φ
O/SX10	24	φ 25	10.5
O/SX12	24	φ 25	12.5

ART.	Confez. Box	Peso Kg Weight	
O/SX10	250	0,037	
O/SX12	250	0,030	

ORNAMENTO



ART.	H	L	φ
O/SS12	26	φ 31	12.5
O/SS14	26	φ 31	14.5

ART.	Confez. Box	Peso Kg Weight	
O/SS12	100	0,061	
O/SS14	100	0,055	

ORNAMENTO



ART.	H	L	φ
O/SV12	26	φ 31	12.5
O/SV14	26	φ 31	14.5

O/SV12 AD ESAURIMENTO
O/SV12 TO EXHAUSTION
O/SV12 À ÉPUISEMENT

ART.	Confez. Box	Peso Kg Weight	
O/SV12	100	0,060	
O/SV14	100	0,047	

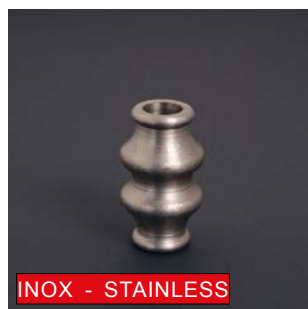
ORNAMENTO



ART.	H	L	φ
O/D12	60	φ 36	12.5
O/D14	60	φ 36	14.5
O/D16	60	φ 36	16.5
O/D18	60	φ 36	18.5

ART.	Confez. Box	Peso Kg Weight	
O/D12	50	0,225	
O/D14	50	0,205	
O/D16	50	0,183	
O/D18	50	0,157	

ORNAMENTO IN ACCIAIO INOX



ART.	H	L	φ
O/D120	60	φ 36	20.5

Ornament in stainless steel.

Ornement en acier inox.

AD ESAURIMENTO
TO EXHAUSTION
À ÉPUISEMENT

ART.	Confez. Box	Peso Kg Weight	
O/D120	50	0,150	

ORNAMENTO



ART.	H	L	φ
O/DX10	42	φ 25	10.5
O/DX12	42	φ 25	12.5

ART.	Confez. Box	Peso Kg Weight	
O/DX10	100	0,060	
O/DX12	100	0,045	

ORNAMENTO



ART.	H	L	φ
O/DS12	60	φ 31	12.5
O/DS14	60	φ 31	14.5

ART.	Confez. Box	Peso Kg Weight	
O/DS12	100	0,116	
O/DS14	100	0,095	

ORNAMENTO



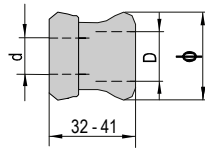
ART.	H	L	φ
O/DV12	60	φ 31	12.5
O/DV14	60	φ 31	14.5

O/DV12 AD ESAURIMENTO
O/DV12 TO EXHAUSTION
O/DV12 À ÉPUISEMENT

ART.	Confez. Box	Peso Kg Weight	
O/DV12	100	0,125	
O/DV14	100	0,104	



DISTANZIATORE REGOLABILE PER GRATE



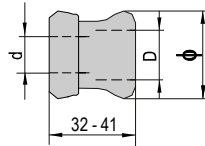
Adjustable spacer for fences.

Entretoise réglable pour grilles.

ART.	d	D	φ
DGL30	12	M18	29,6
DGL	14	M20	34,6

ART.	Confez. Box	Peso Kg Weight	
DGL30	20	0,200	
DGL	20	0,270	

DISTANZIATORE REGOLABILE PER GRATE, IN ACCIAIO ZINCATO



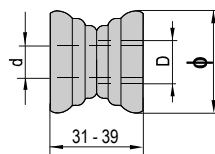
Adjustable spacer for fences, in zinked steel.

Entretoise réglable pour grilles, en acier zingué.

ART.	d	D	φ
DGL30Z	12	M18	29,6
DGLZ	14	M20	34,6

ART.	Confez. Box	Peso Kg Weight	
DGL30Z	20	0,200	
DGLZ	20	0,270	

DISTANZIATORE REGOLABILE PER GRATE



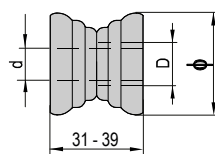
Adjustable spacer for fences.

Entretoise réglable pour grilles.

ART.	d	D	φ
DGB30	14,5	M20	30
DGB34	14,5	M20	34

ART.	Confez. Box	Peso Kg Weight	
DGB30	20	0,085	
DGB34	20	0,118	

DISTANZIATORE REGOLABILE PER GRATE, IN ACCIAIO ZINCATO



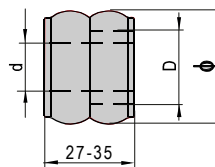
Adjustable spacer for fences, in zinked steel.

Entretoise réglable pour grilles, en acier zingué.

ART.	d	D	φ
DGB30Z	14,5	M20	30
DGB34Z	14,5	M20	34

ART.	Confez. Box	Peso Kg Weight	
DGB30Z	20	0,085	
DGB34Z	20	0,118	

DISTANZIATORE REGOLABILE PER GRATE



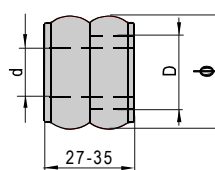
Adjustable spacer for fences.

Entretoise réglable pour grilles.

ART.	d	D	φ
DGA30	12	M18	30
DGA35	14	M22	34,5

ART.	Confez. Box	Peso Kg Weight	
DGA30	20	0,087	
DGA35	20	0,122	

DISTANZIATORE REGOLABILE PER GRATE, IN ACCIAIO ZINCATO



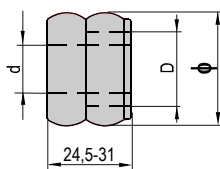
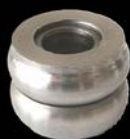
Adjustable spacer for fences, in zinked steel.

Entretoise réglable pour grilles, en acier zingué.

ART.	d	D	φ
DGA30Z	12	M18	30
DGA35Z	14	M22	34,5

ART.	Confez. Box	Peso Kg Weight	
DGA30Z	20	0,087	
DGA35Z	20	0,122	

DISTANZIATORE REGOLABILE PER GRATE

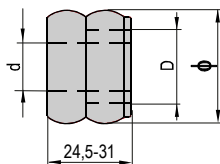
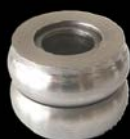


Adjustable spacer for fences.
Entretoise réglable pour grilles.

ART.	d	D	φ
DGC35	14	M22	34,5

ART.	Confez. Box	Peso Kg Weight	
DGC35	20	0,110	

DISTANZIATORE REGOLABILE PER GRATE, IN ACCIAIO ZINCATO

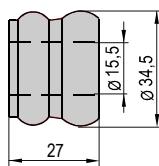


Adjustable spacer for fences, in zinked steel.
Entretoise réglable pour grilles, en acier zingué.

ART.	d	D	φ
DGC35Z	14	M22	34,5

ART.	Confez. Box	Peso Kg Weight	
DGC35Z	20	0,110	

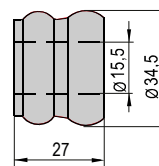
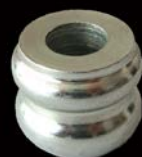
DISTANZIATORE FISSO PER GRATE



Fix spacer for fences.
Entretoise fixe pour grilles.

ART.	Confez. Box	Peso Kg Weight	
DGCF35	20	0,130	

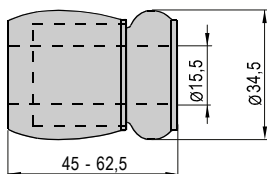
DISTANZIATORE FISSO PER GRATE, IN ACCIAIO ZINCATO



Fix spacer for fences, in zinked steel.
Entretoise fixe pour grilles, en acier zingué.

ART.	Confez. Box	Peso Kg Weight	
DGCF35Z	20	0,130	

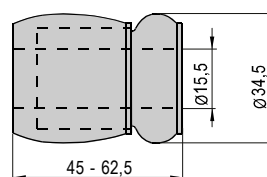
DISTANZIATORE REGOLABILE PER GRATE



Adjustable spacer for fences.
Entretoise réglable pour grilles.

ART.	Confez. Box	Peso Kg Weight	
DGH35	20	0,193	

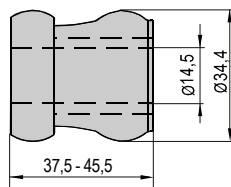
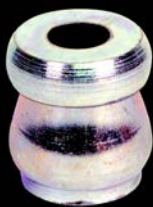
DISTANZIATORE REGOLABILE PER GRATE, IN ACCIAIO ZINCATO



Adjustable spacer for fences, in zinked steel.
Entretoise réglable pour grilles, en acier zingué.

ART.	Confez. Box	Peso Kg Weight	
DGH35Z	20	0,193	

DISTANZIATORE REGOLABILE PER GRATE

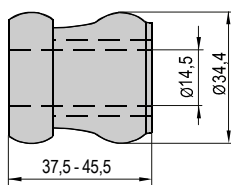
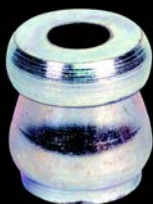


Adjustable spacer for fences.

Entretoise réglable pour grilles.

ART.	Confez. Box	Peso Kg Weight
DGI35	20	0,135

DISTANZIATORE REGOLABILE PER GRATE, IN ACCIAIO ZINCATO

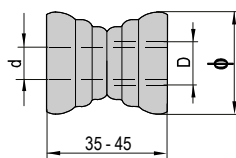


Adjustable spacer for fences, in zinked steel.

Entretoise réglable pour grilles, en acier zingué.

ART.	Confez. Box	Peso Kg Weight
DGI35Z	20	0,135

DISTANZIATORE REGOLABILE PER GRATE



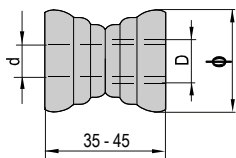
Adjustable spacer for fences.

Entretoise réglable pour grilles.

ART.	d	D	φ
DGN30	14,5	M20	30

ART.	Confez. Box	Peso Kg Weight
DGN30	20	0,098

DISTANZIATORE REGOLABILE PER GRATE, IN ACCIAIO ZINCATO



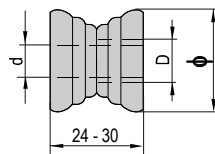
Adjustable spacer for fences, in zinked steel.

Entretoise réglable pour grilles, en acier zingué.

ART.	d	D	φ
DGN30Z	14,5	M20	30

ART.	Confez. Box	Peso Kg Weight
DGN30Z	20	0,098

DISTANZIATORE REGOLABILE PER GRATE



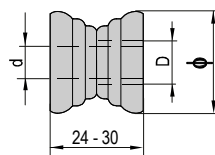
Adjustable spacer for fences.

Entretoise réglable pour grilles.

ART.	d	D	φ
DGP30	14,5	M20	30

ART.	Confez. Box	Peso Kg Weight
DGP30	20	0,070

DISTANZIATORE REGOLABILE PER GRATE, IN ACCIAIO ZINCATO



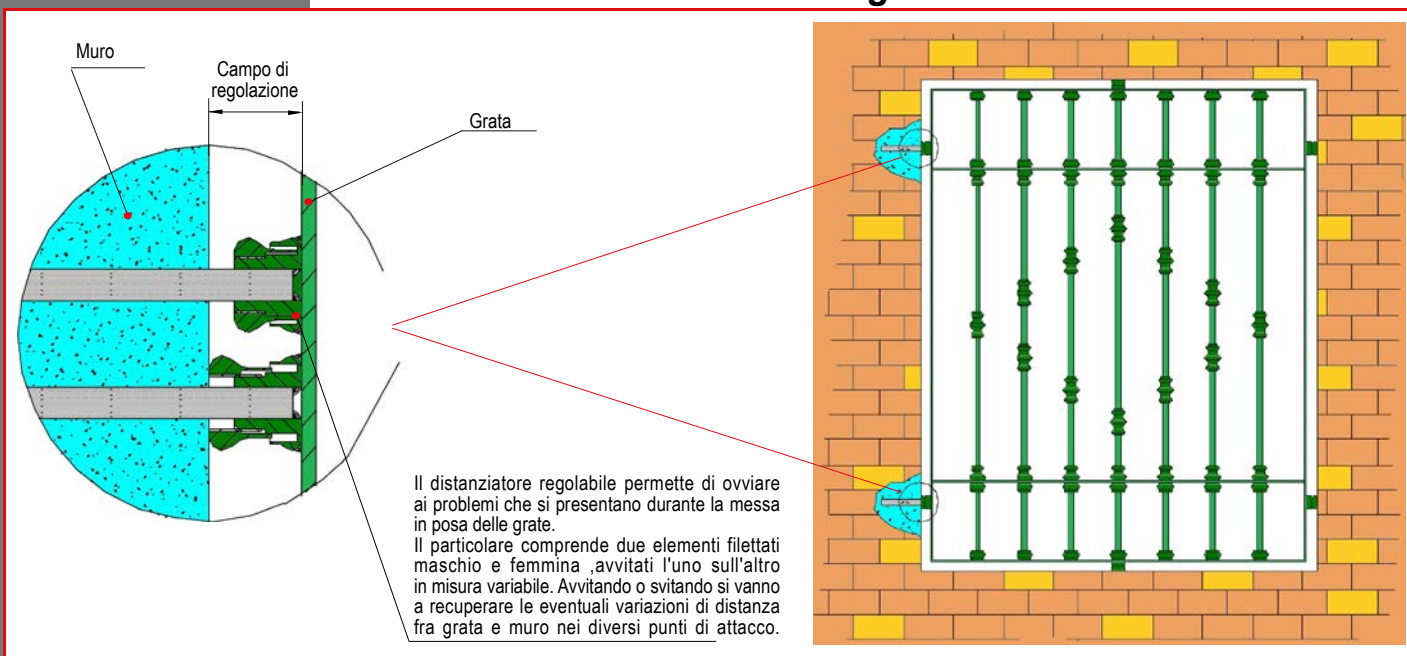
Adjustable spacer for fences, in zinked steel.

Entretoise réglable pour grilles, en acier zingué.

ART.	d	D	φ
DGP30Z	14,5	M20	30

ART.	Confez. Box	Peso Kg Weight
DGP30Z	20	0,070

Distanziatore regolabile - Adjustable spacer Entretoise réglable



PETTITI GIUSEPPE s.p.a.

BORCHIE E ORNAMENTI IN OTTONE

BOSSES AND ORNAMENTS IN BRASS

GARNITURES ET ORNEMENTS EN LAITON

ORNAMENTO



ART.	H	L	φ
O/POT14	38	φ 40	14.5

ART.	Confez. Box	Peso Kg Weight
O/POT14	50	0,173

ORNAMENTO



ART.	H	L	φ
OD/POT14	65	φ 40	14.5

ART.	Confez. Box	Peso Kg Weight
OD/POT14	50	0,260

ORNAMENTO



ART.	H	L	φ
O/DXOT12	42	φ 25	14.2

ART.	Confez. Box	Peso Kg Weight
O/DXOT12	100	0,050

ORNAMENTO



ART.	H	L	φ
O/DSOT12	60	φ 31	12.5
O/DSOT14	60	φ 34	14.5

ART.	Confez. Box	Peso Kg Weight
O/DSOT12	100	0,129
O/DSOT14	100	0,110

BORCHIA



ART.	H	L	φ
B/TOT12	22	φ 40	12.5
B/TOT14	22	φ 40	14.5
B/TOT16	22	φ 40	16.5

ART.	Confez. Box	Peso Kg Weight
B/TOT12	100	0,155
B/TOT14	100	0,145
B/TOT16	100	0,138



PETTITI GIUSEPPE s.p.a.

BORCHIE E ORNAMENTI IN OTTONE LUCIDO

BOSSES AND ORNAMENTS IN BRIGHT BRASS

GARNITURES ET ORNEMENTS EN LAITON POLI

ORNAMENTO



ART.	H	L	φ
O/SXOTL10	24	φ 25	10.5
O/SXOTL12	24	φ 25	12.5

AD ESAURIMENTO
TO EXHAUSTION
À ÉPUISEMENT

ART.	Confez. Box	Peso Kg Weight	
O/SXOTL10	200	0,040	
O/SXOTL12	200	0,030	

ORNAMENTO



ART.	H	L	φ
O/DXOTL10	42	φ 25	10.5
O/DXOTL12	42	φ 25	12.2

AD ESAURIMENTO
TO EXHAUSTION
À ÉPUISEMENT

ART.	Confez. Box	Peso Kg Weight	
O/DXOTL10	100	0,065	
O/DXOTL12	100	0,050	



PETTITI GIUSEPPE s.p.a.

POMOLI E PIGNE IN ACCIAIO FORGIATO

BALL GRIPS AND CROWNS IN FORGED STEEL

POMMEAUX ET POMMES DE-PIN EN ACIER FORGE

POMOLO



ART.	H	Base
CP/2028	80	● 28

ART.	Confez. Box	Peso Kg Weight	
CP/2028	25	0,452	

POMOLO



ART.	H	Base
CP/5050F	90	● 50

ART.	Confez. Box	Peso Kg Weight	
CP/5050F	20	0,830	

POMOLO



ART.	H	Base
CP/2040	88.5	● 40

ART.	Confez. Box	Peso Kg Weight	
CP/2040	25	0,554	

POMOLO



ART.	H	Base
CP/2055F	120	● 55

ART.	Confez. Box	Peso Kg Weight	
CP/2055F	10	0,610	

POMOLO



ART.	H	Sfera
CP/2048	100	● 48
CP/2050F	100	● 50

ART.	Confez. Box	Peso Kg Weight	
CP/2048	15	0,864	
CP/2050F	20	0,864	



PETTITI GIUSEPPE s.p.a. Accessori per porte scorrevoli e serramenti metallici

POMOLO



ART.	H	Base
CP/4530F	45	● 30
CP/5045F	62	● 37
CP/7055F	70	● 47
CP/8065F	80	● 65

ART.	Confez. Box	Peso Kg Weight
CP/4530F	100	0,178
CP/5045F	25	0,400
CP/7055F	20	0,778
CP/8065F	10	1,502

PIGNA



ART.	H	L	Base
PG10	110	45	■ 10
PG12	130	50	■ 12
PG14	130	60	■ 14
PG16	170	70	■ 16

ART.	Confez. Box	Peso Kg Weight
PG10	50	0,180
PG12	30	0,196
PG14	20	0,266
PG16	15	0,478

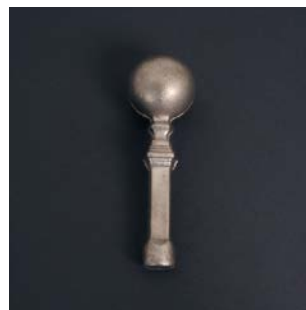
ORNAMENTO



ART.	H	D	φ
PO12Q	100	φ 27	12

ART.	Confez. Box	Peso Kg Weight
PO12Q	50	0,160

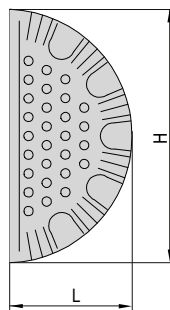
ORNAMENTO



ART.	H	D	φ
PO18T	125	φ 40	18

ART.	Confez. Box	Peso Kg Weight
PO18T	50	0,372

MANIGLIA SAGOMATA PER CANCELLI

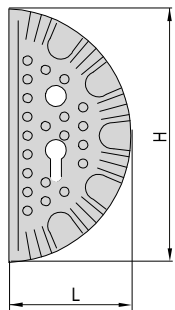


Shaped handle for gates.
Poignée façonnée pour grilles.

ART.	H	L	S
MC	270	130	3

ART.	Confez. Box	Peso Kg Weight
MC	30	0,570

MANIGLIA SAGOMATA PER CANCELLI, FORO PER SERRATURA



MCF/D	Versione destra Right version Version droite
MCF/S	Versione sinistra Left version Version gauche

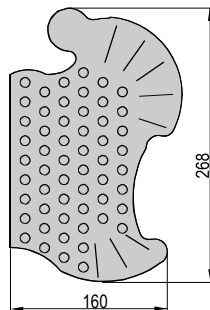
Shaped handle for gates, hole for lock.
Poignée façonnée pour grilles, trou pour serrure.

ART.	H	L	S
MCF/D	270	130	3
MCF/S	270	130	3

AD ESAURIMENTO
TO EXHAUSTION
À ÉPUISEMENT

ART.	Confez. Box	Peso Kg Weight
MCF/D	10	0,570
MCF/S	10	0,570

MANIGLIA SAGOMATA PER CANCELLI

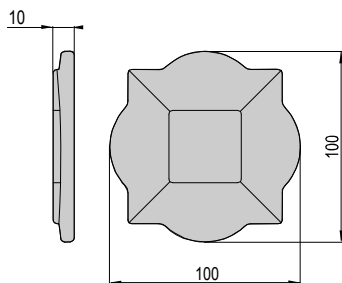


Shaped handle for gates.
Poignée façonnée pour grilles.

MCC/D	Versione destra Right version Version droite
MCC/S	Versione sinistra Left version Version gauche

ART.	Confez. Box	Peso Kg Weight
MCC/D	10	0,664
MCC/S	10	0,664

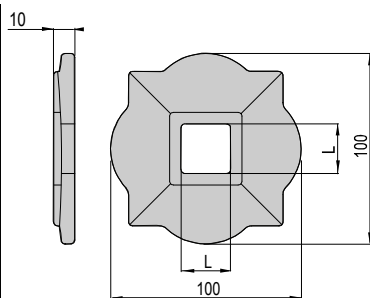
ORNAMENTO IN ACCIAIO DI FUSIONE



Ornament in cast steel.
Ornement en acier coulé.

ART.	Confez. Box	Peso Kg Weight	
PIAS/CF	50	0,434	

ORNAMENTO FORATO IN ACCIAIO DI FUSIONE

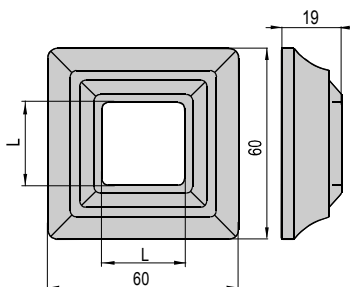
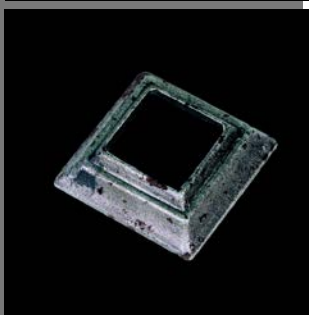


Drilled ornament in cast steel.
Ornement percé en acier coulé.

ART.	L
PIAS/Q25F	26
PIAS/Q30F	31

ART.	Confez. Box	Peso Kg Weight	
PIAS/Q25F	50	0,413	
PIAS/Q30F	50	0,404	

ORNAMENTO FORATO IN ACCIAIO DI FUSIONE

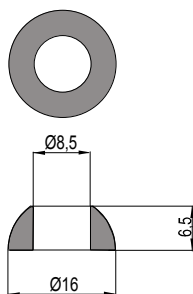


Drilled ornament in cast steel.
Ornement percé en acier coulé.

ART.	L
PIAS60/Q25F	26
PIAS60/Q30F	31

ART.	Confez. Box	Peso Kg Weight	
PIAS60/Q25F	50	0,139	
PIAS60/Q30F	50	0,129	

BORCHIA FINTO CHIEDO PER PORTONI RUSTICI, IN ACCIAIO



Boss with patented nail, in steel.
Garniture avec feint clou, en acier.

ART.	Confez. Box	Peso Kg Weight	
CF16	200	0,008	



PETTITI GIUSEPPE s.p.a.

SFERE IN OTTONE E ACCIAIO

BRASS AND STEEL BALLS

BOULES EN LAITON ET EN ACIER

SFERA TORNITA IN OTTONE



ART.	φ	Foro/Hole
SF/32OT14	32	φ 14.5

Sfera in ottone con foro tondo passante.
Ball in brass, with hole.
Boule en laiton, avec trou.

ART.	Confez. Box	Peso Kg Weight	
SF/32OT14	100	0,100	

SFERA TORNITA IN OTTONE



ART.	φ	Foro/Hole
SF/32OT	32	M6
SF/49OT	49	M10

Sfera in ottone, con foro filettato cieco.
Ball in brass, with blind threaded hole.
Boule en laiton avec trou fileté aveugle.

ART.	Confez. Box	Peso Kg Weight	
SF/32OT	100	0,140	
SF/49OT	25	0,486	



PETTITI GIUSEPPE s.p.a. Accessori per porte scorrevoli e serramenti metallici

SFERA TORNITA IN ACCIAIO



ART.	H	φ	Foro/Hole
SF20T	20.4	20	M6
SF25T	25.5	25	M8
SF30T	30.6	30	M10
SF50T	51	50	M12

Sfera in acciaio, con foro filettato cieco.

Ball in steel, with blind threaded hole.

Boule en acier avec trou fileté aveugle.

ART.	Confez. Box	Peso Kg Weight	
SF20T	200	0,040	
SF25T	200	0,075	
SF30T	100	0,110	
SF50T	25	0,485	

SFERA CON STRIATURE



ART.	H	φ
SF20S	20.4	20
SF25S	25.5	25
SF30S	30.6	30
SF50S	51	50

Sfera con striature in acciaio di fusione.

Ball with striations, in caston iron.

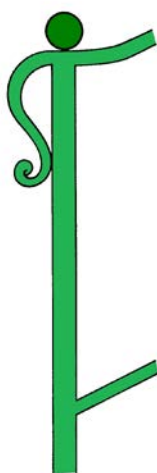
Boule avec striure, en acier coule.

ART.	Confez. Box	Peso Kg Weight	
SF20S	200	0,040	
SF25S	200	0,075	
SF30S	100	0,110	
SF50S	25	0,485	

SFERA IN ACCIAIO



ART.	φ
SF15	15
SF20	20
SF25	25
SF30	30
SF35	35
SF40	40
SF50	50
SF60	60
SF70	70
SF80	80
SF90	90
SF100	100



Sfera liscia in acciaio stampato.

Sleek ball in stamped steel.

Boule lisse en acier estampé.

ART.	Confez. Box	Peso Kg Weight	
SF15	200	0,012	
SF20	200	0,037	
SF25	200	0,062	
SF30	100	0,110	
SF35	100	0,170	
SF40	50	0,254	
SF50	25	0,523	
SF60	20	0,880	
SF70	10	1,476	
SF80	7	2,968	
SF90	5	3,038	
SF100	4	4,000	

Accessori per cancelli in ferro battuto con apertura a battente.

Accessories for clapper gates wrought iron.

Accessoires pour portails à battant en fer façonné.





PETTITI GIUSEPPE s.p.a.

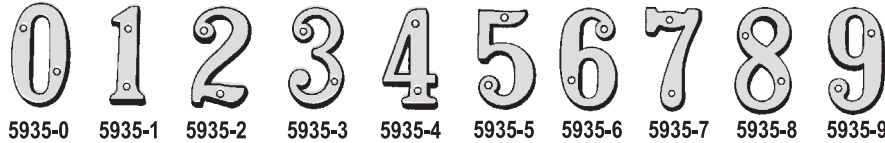
NUMERI E LETTERE CIVICI

NUMERI E LETTERE CIVICI IN OTTONE LUCIDO

NUMBERS AND LETTERS IN BRIGHT BRASS

CHIFFRES ET LETTRES EN LAITON POLI

NUMERI CIVICI



5935-0 5935-1 5935-2 5935-3 5935-4 5935-5 5935-6 5935-7 5935-8 5935-9

Numeri civici in ottone lucido, completi di tasselli di fissaggio. H= 75 mm, Sp. = 3 mm. Ogni singolo numero in skinpak.

Numbers in bright brass, with fixing dowels. H= 75 mm, Sp. = 3 mm. Every number in skinpak.

Chiffres en laiton poli, avec tasseaux de fixation. H= 75 mm, Sp. = 3 mm. Chaque chiffre en emballage sous film.

AD ESAURIMENTO
TO EXHAUSTION
À ÉPUISEMENT

ART.	Confez. Box	Peso Kg Weight
5935-	10	0,050

NUMERI CIVICI



5936-0 5936-1 5936-2 5936-3 5936-4 5936-5 5936-6 5936-7 5936-8 5936-9

Numeri civici in ottone lucido, completi di tasselli di fissaggio. H= 100 mm, Sp. = 4 mm. Ogni singolo numero in skinpak.

Numbers in bright brass, with fixing dowels. H= 100 mm, Sp. = 4 mm. Every number in skinpak.

Chiffres en laiton poli, avec tasseaux de fixation. H= 100 mm, Sp. = 4 mm. Chaque chiffre en emballage sous film.

ART.	Confez. Box	Peso Kg Weight
5936-	10	0,060

NUMERI CIVICI



5937-0 5937-1 5937-2 5937-3 5937-4 5937-5 5937-6 5937-7 5937-8 5937-9

Numeri civici in ottone lucido, completi di tasselli di fissaggio. H= 140 mm, Sp. = 5 mm. Ogni singolo numero in skinpak.

Numbers in bright brass, with fixing dowels. H= 140 mm, Sp. = 5 mm. Every number in skinpak.

Chiffres en laiton poli, avec tasseaux de fixation. H= 140 mm, Sp. = 5 mm. Chaque chiffre en emballage sous film.

AD ESAURIMENTO
TO EXHAUSTION
À ÉPUISEMENT

ART.	Confez. Box	Peso Kg Weight
5937-	10	0,060

LETTERE CIVICHE



5941-A 5941-B 5941-C 5941-D 5941-E 5941-F 5941-G



5941-H 5941-I 5941-J 5941-K 5941-L 5941-M 5941-N



5941-O 5941-P 5941-Q 5941-R 5941-S 5941-T 5941-U



5941-V 5941-W 5941-X 5941-Y 5941-Z

Lettere civiche in ottone lucido, complete di tasselli di fissaggio. H= 75 mm, Sp. = 3 mm. Ogni singola lettera in skinpak.

Letters in bright brass, with fixing dowels. H= 75 mm, Sp. = 3 mm. Every letter in skinpak.

Lettres en laiton poli, avec tasseaux de fixation. H= 75 mm, Sp. = 3 mm. Chaque lettre en emballage sous film.

ART.	Confez. Box	Peso Kg Weight
5941-	10	0,050

